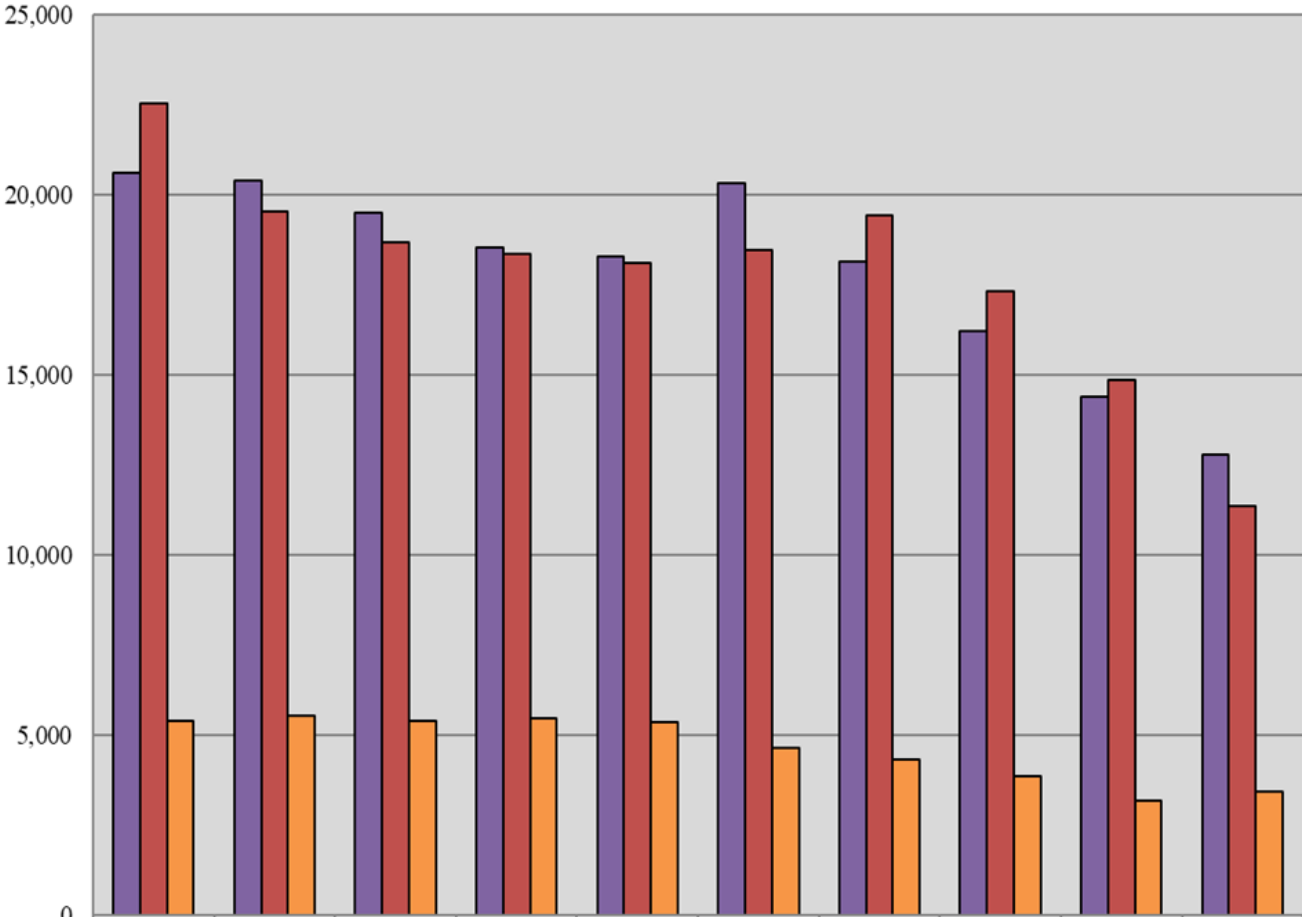


Superior Court Total 10-Year Caseload Trend



	2012	2013	2014	2015	2016	2017	2018	2019	2020	2021
■ Filings	20,616	20,397	19,504	18,540	18,292	20,315	18,132	16,211	14,375	12,793
■ Dispositions	22,544	19,527	18,663	18,354	18,109	18,447	19,405	17,298	14,834	11,364
■ VOP Filings	5,384	5,520	5,378	5,465	5,358	4,639	4,307	3,865	3,179	3,402

Fiscal Year